

Passively Q-switched DPSS laser · ps to ns pulses · UV to IR · up to 10 W

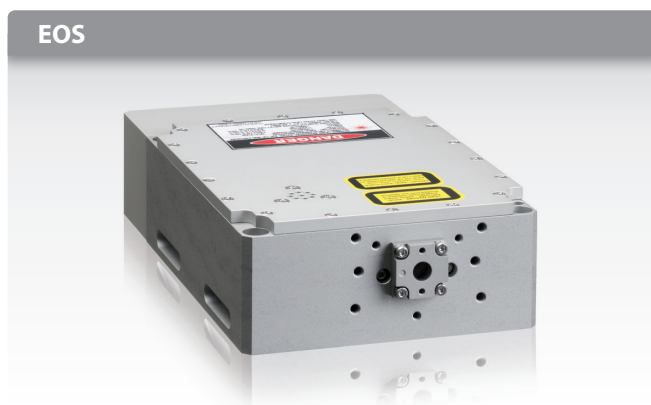
EOS / HALO · PRODUCT LINE

APPLICATIONS

- Thin-film scribing (photovoltaics, electronics)
- Micromachining (engraving, quasi-cold ablation)
- Marking
- Electronics (dicing and repair, displays, OLED)
- Physics (time resolved luminescence measurements, spectroscopy, ranging)
- Biology (laser microdissection (LMD), matrix assisted laser desorption and ionization (MALDI), ophthalmology)

GENERAL FEATURES

- Diode-pumped solid-state laser
- Picosecond to nanosecond passively Q-switched laser
- Wavelength from UV to IR
- High repetition frequencies
- Optional true hermetic sealing for long life operation
- Superior reliability and ruggedness
- High volume OEM applications
- Ultra compact
- Low cost of ownership

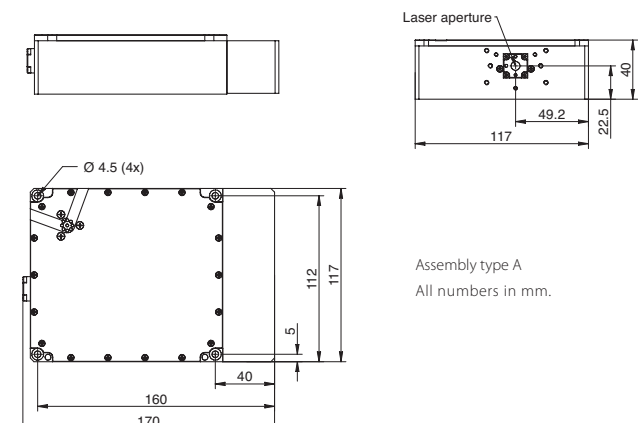
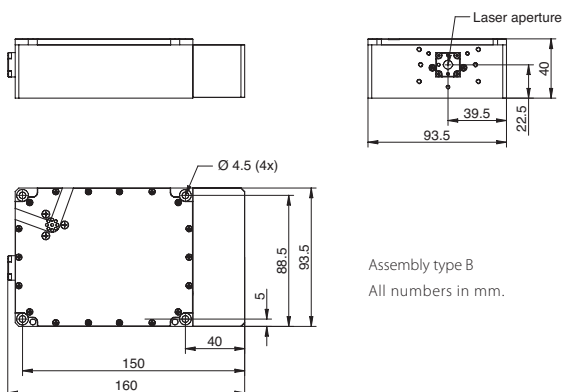


SPECIFICATIONS

	EOS	HALO	Unit
Wavelength	1064, 1030, 532, 515, 355, 343 ¹⁾	1030, 515, 343 ¹⁾	nm
Average power	≤ 2	≤ 10	W
Laser control electronics	Digital, OEM ²⁾	Digital, OEM ²⁾	

¹⁾ Other laser materials and wavelength on request.

²⁾ Power supply not included, PC required.



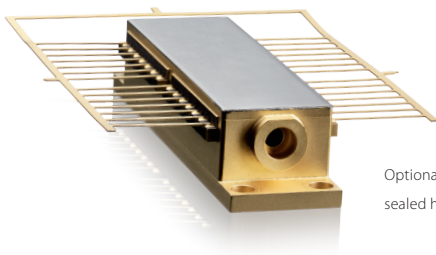
THE ART OF SOLID-STATE LASERS

Passively Q-switched DPSS laser · ps to ns pulses · UV to IR · up to 10 W

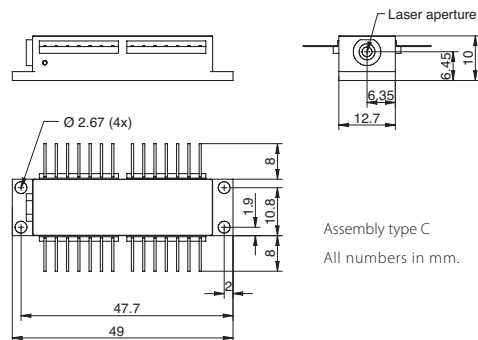
EOS / HALO · PRODUCT LINE

SPECIFICATIONS

	EOS	HALO	Unit
Operational mode	Passively Q-switched	Passively Q-switched	
Pulse repetition frequency	< 100	< 300	kHz
Pulse width (FWHM)	0.5...10	0.5...10	ns
Spatial mode	TEM ₀₀ (M ² < 1.3)	TEM ₀₀ (M ² < 1.3)	
Beam diameter (1/e ²)	0.5...3	0.5...3	mm
Polarization	Linear	Linear	
Laser head size, w · h · d	94 · 40 · 159	117 · 40 · 170	mm
Laser electronics size, w · h · d	150 · 45 · 130	150 · 45 · 130	mm
Laser head weight	1.15	1.45	kg
Laser electronics weight	0.75	0.75	kg
Base plate temperature	15...35	15...35	°C
Storage condition	0...50	0...50	°C
Relative humidity	< 80	< 80	%
Cable length laser head	≤ 3	≤ 3	m
Maximum inrush current	< 5	< 5	A
Operating voltage	24 ± 2	24 ± 2	V



Optional true hermetically sealed housing



Assembly type C
All numbers in mm.

OPTIONS

Options

- Fiber coupling
- Optosync (optical synchronization)
- Beam expander
- Cooling assembly
- True hermetic sealing

The InnoLight EOS / HALO is a component intended for integration into an OEM made laser system. The OEM customer will be responsible for the system's compliance to any standards or other pertaining regulations. The device must be handled by personnel with experience of lasers in laboratory environment and with access to adequate laser safety equipment. The device contains elements sensitive to electrostatic discharge. Therefore, the device shall be handled in an ESD protected workstation. Subject to change without notice.

This product does not comply with US FDA CFR 21, section 1040.11 and 1040.11

InnoLight – Innovative Laser und Systemtechnik GmbH

Garbsener Landstrasse 10 · 30419 Hannover · Germany

Phone: +49 511 760 727-0 · Fax: +49 511 760 727-99

E-mail: sales@innolight.de · Web: www.innolight.de

